

# Material Choice for your Floating Deck System

A short resource guide

A floating deck system provides a versatile foundation, allowing you to choose from a wide range of decking materials to achieve your desired look and feel. When using adjustable pedestals like Deck Jacks NZ, compatibility and proper support are key. Here's a look at some popular options

## 1 Timber

**The Look:** The classic Kiwi choice, offering natural warmth and beauty. Common options include treated Pine, Kwila, Vitex, and Garapa.

**Suitability:** Works exceptionally well with floating systems.

**Deck Jacks Advantage:** Critically, Deck Jacks elevate timber joists and bearers off the ground and away from direct contact with potentially damp surfaces (like concrete pads or soil). This significantly reduces the risk of rot and decay, extending the life of your timber sub-frame. Our specialised joist heads ensure secure and stable fixing for your timber structure.

**Key Tip:** Ensure timber is appropriately treated for its use (minimum H3.2 for above-ground use, check NZS 3602 requirements) and allow for proper ventilation

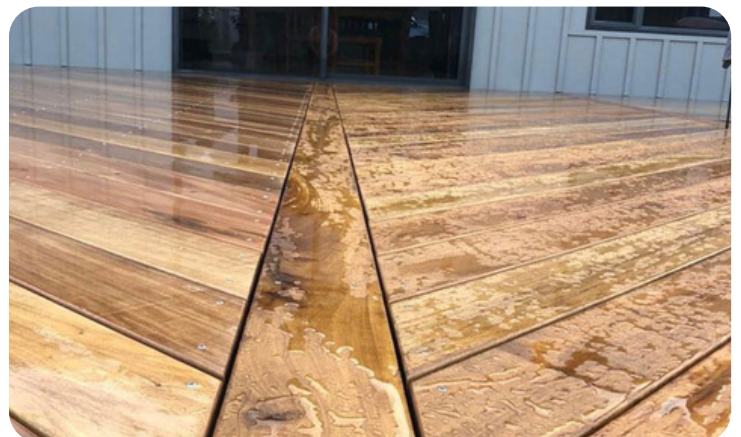
## 2. Composite Decking

**The Look:** Offers the appearance of timber but with enhanced durability and lower maintenance. Available in various colours and finishes.

**Suitability:** A popular choice for modern decks. Requires a very stable and level sub-frame, as composites can show imperfections more readily than timber.

**Deck Jacks Advantage:** Deck Jacks provide the perfectly level and stable foundation that composite decking requires. The precise adjustability ensures the sub-frame is flat, preventing bowing or warping of the composite boards. The elevated structure also provides excellent ventilation, which is often recommended by composite decking manufacturers

==>



<===

**Key Tip:** Ensure you follow the specific installation guidelines provided by the composite decking manufacturer regarding joist spacing and ventilation requirements.

### 3. Tiles and Pavers

**The Look:** Creates a sleek, contemporary, hard-wearing surface. Ideal for seamless indoor-outdoor flow, balconies, and rooftop areas.

**Suitability:** Excellent only if you use structural-rated tiles or pavers specifically designed and warranted for use on pedestal systems. Standard floor or wall tiles are NOT suitable or safe.

**Deck Jacks Advantage:** Our system includes specialised paver/tile heads with integrated spacer lugs. These ensure consistent, drainage-friendly gaps between units and hold them securely. Deck Jacks easily support the weight of heavy pavers and allow for easy removal of individual units for access to membranes or services below, without disturbing the rest of the deck.

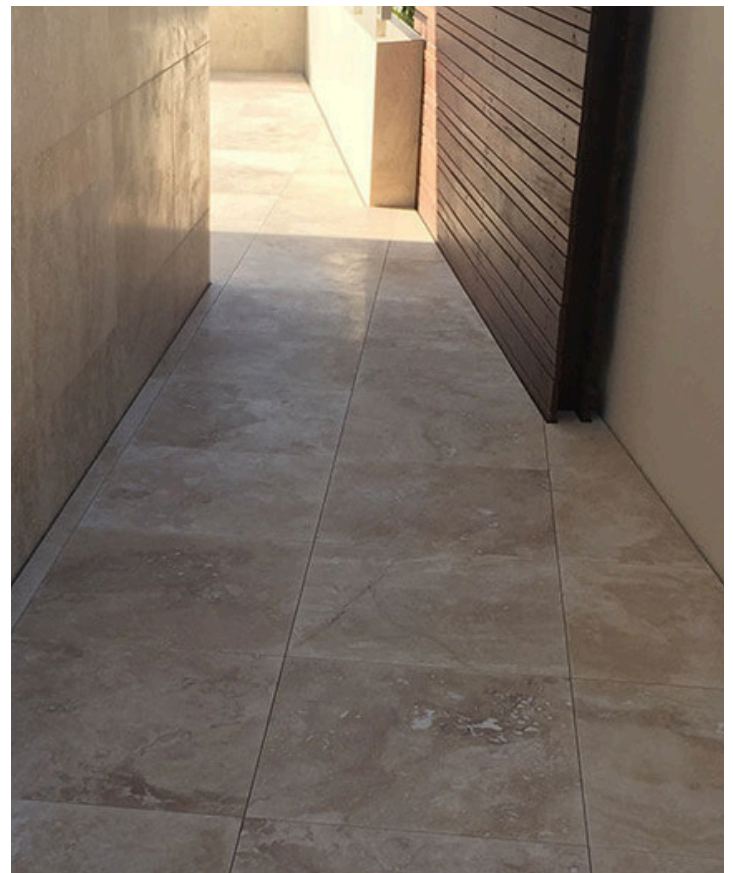
**Key Tip:** Always confirm with the tile/paver supplier that their product is certified for pedestal installation and understand their specific support requirements (e.g., number of pedestals per paver).



## In Summary

Adjustable Deck Jacks provide a robust and compatible foundation for virtually any popular decking material available in New Zealand. They enhance the performance and longevity of timber, provide the stability needed for composites, and offer a specialised solution for structural tiles and pavers.

Discuss your material choice with your designer or builder to ensure the perfect match with the Deck Jacks system



Considering a new deck? A floating system using Deck Jacks offers a smart, durable, and versatile foundation solution.

Phone: [021 179 9563](tel:0211799563)

Email: [hello@deckjacks.nz](mailto:hello@deckjacks.nz)

Website: <https://deckjacks.nz>